

Display Point & Free Zone

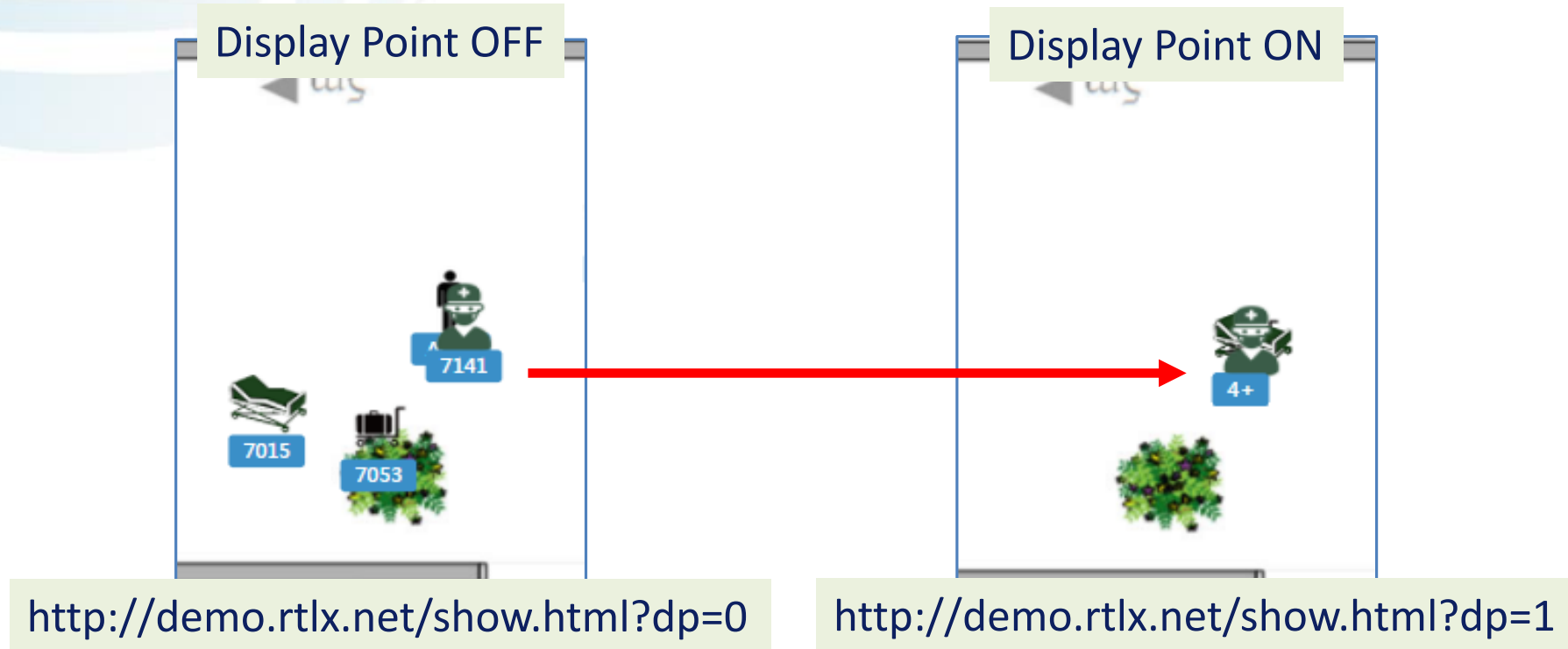


Contents

1. The Function description of Display Point
2. Log in to the management page
3. Setting Display Point
4. Example of using Display Point
5. Setting Free Zone
6. Example of using Free Zone

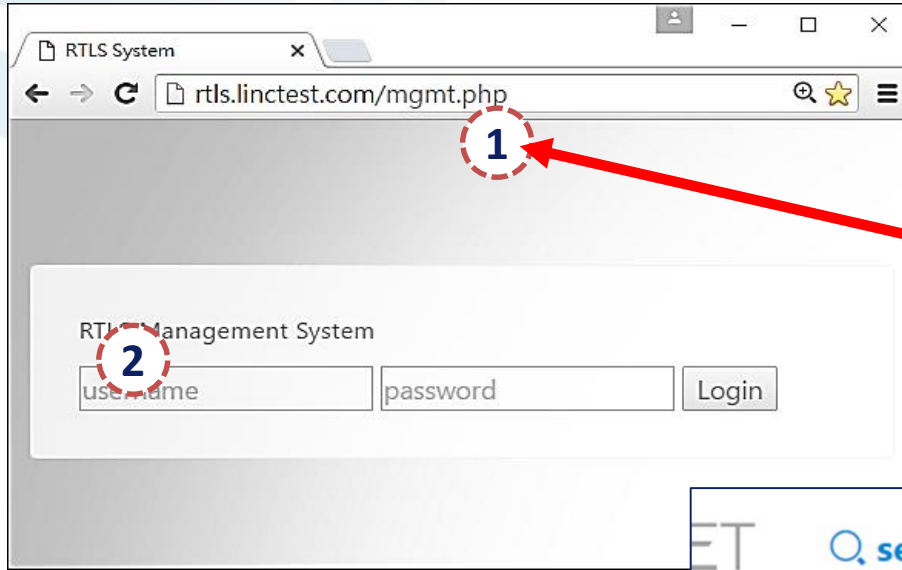


1. The Function description of Display Point

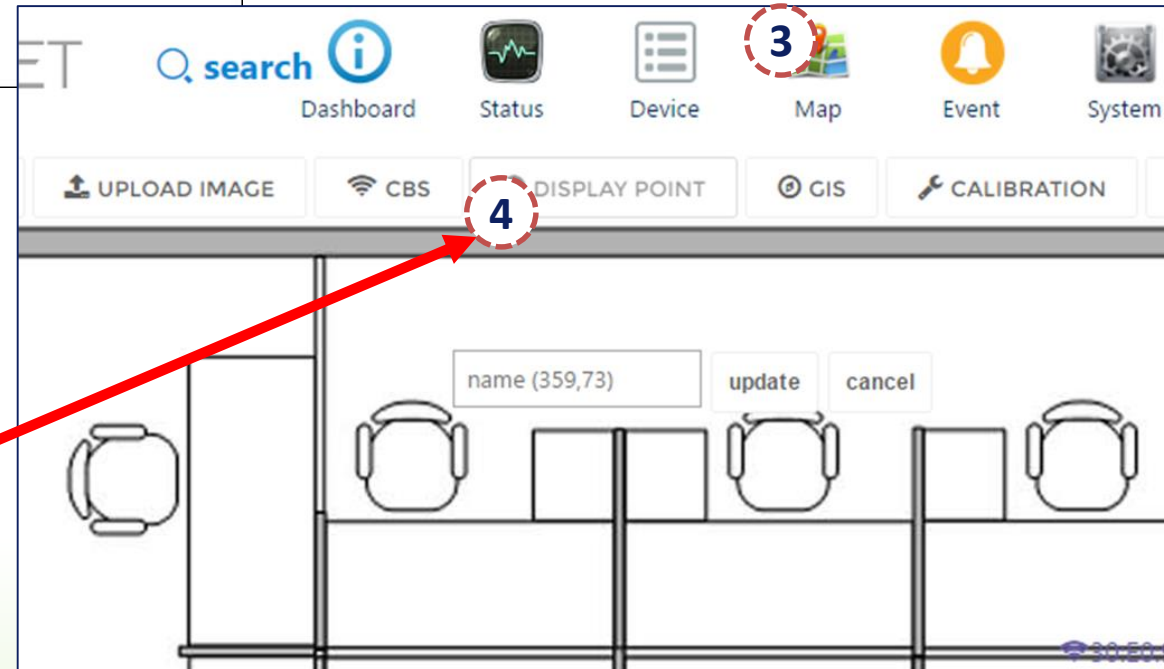


- you can define the position where you want to show the icons on the map.
- The icons will be grouped to the closest display point automatically, and this make checking icon more clear & convenient.
- This function is enabled by default on show page, or you can forcely enable it by adding “?dp=1” to the suffix of "show.html".
- You can disable it by adding " ?dp=0" to the suffix of "show.html", the icons will be shown on the real time located position.

2. Log in to the management site

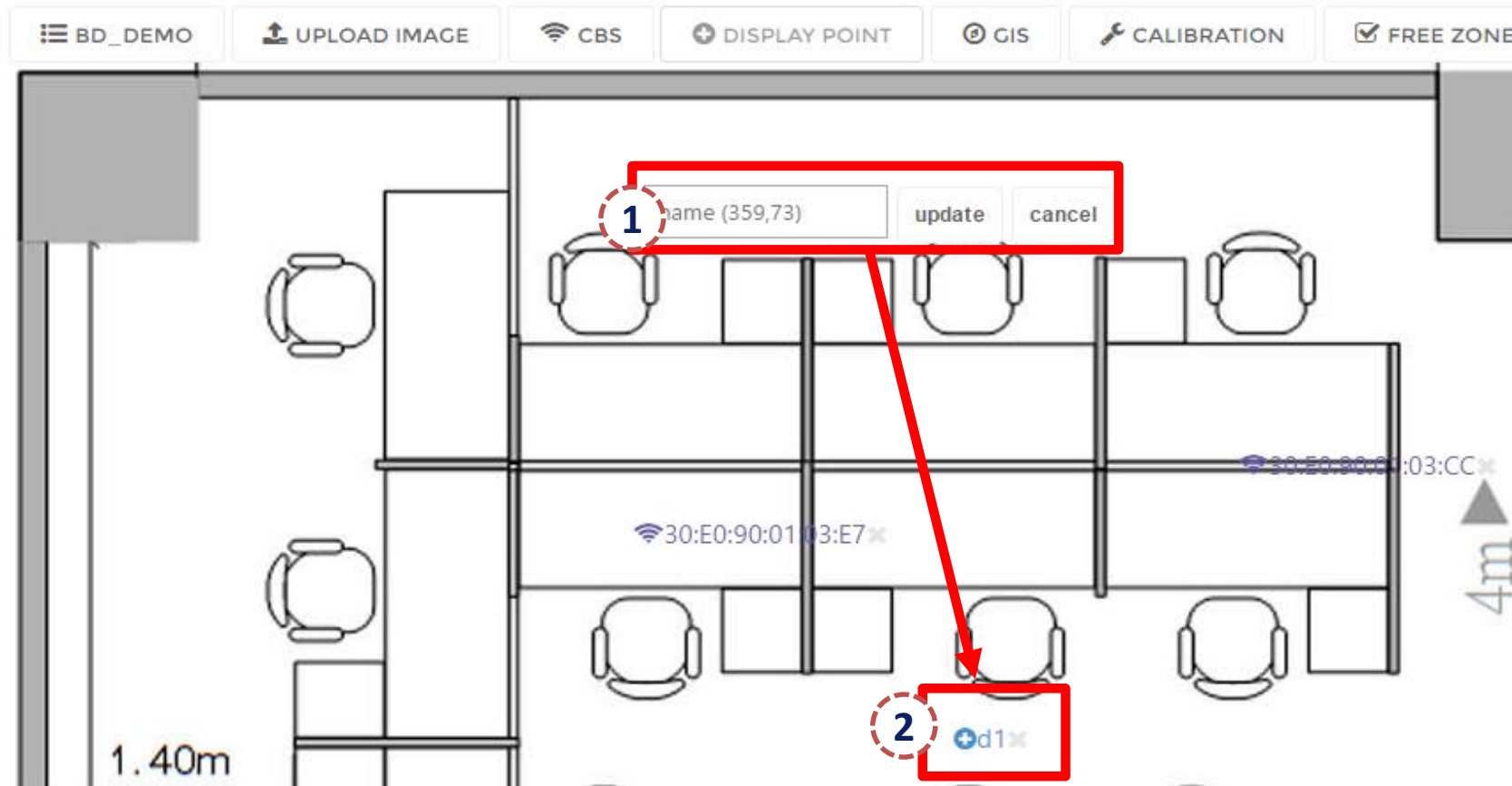


- | | |
|---|---|
| 1 | URL of management site :
demo.rtlx.net/mgmt.html |
| 2 | Login with ID/pwd |



- | | |
|---|-----------------------------|
| 3 | Head Function Menu :
Map |
| 4 | Tab :
DISPLAY POINT |

3. Setting Display Point



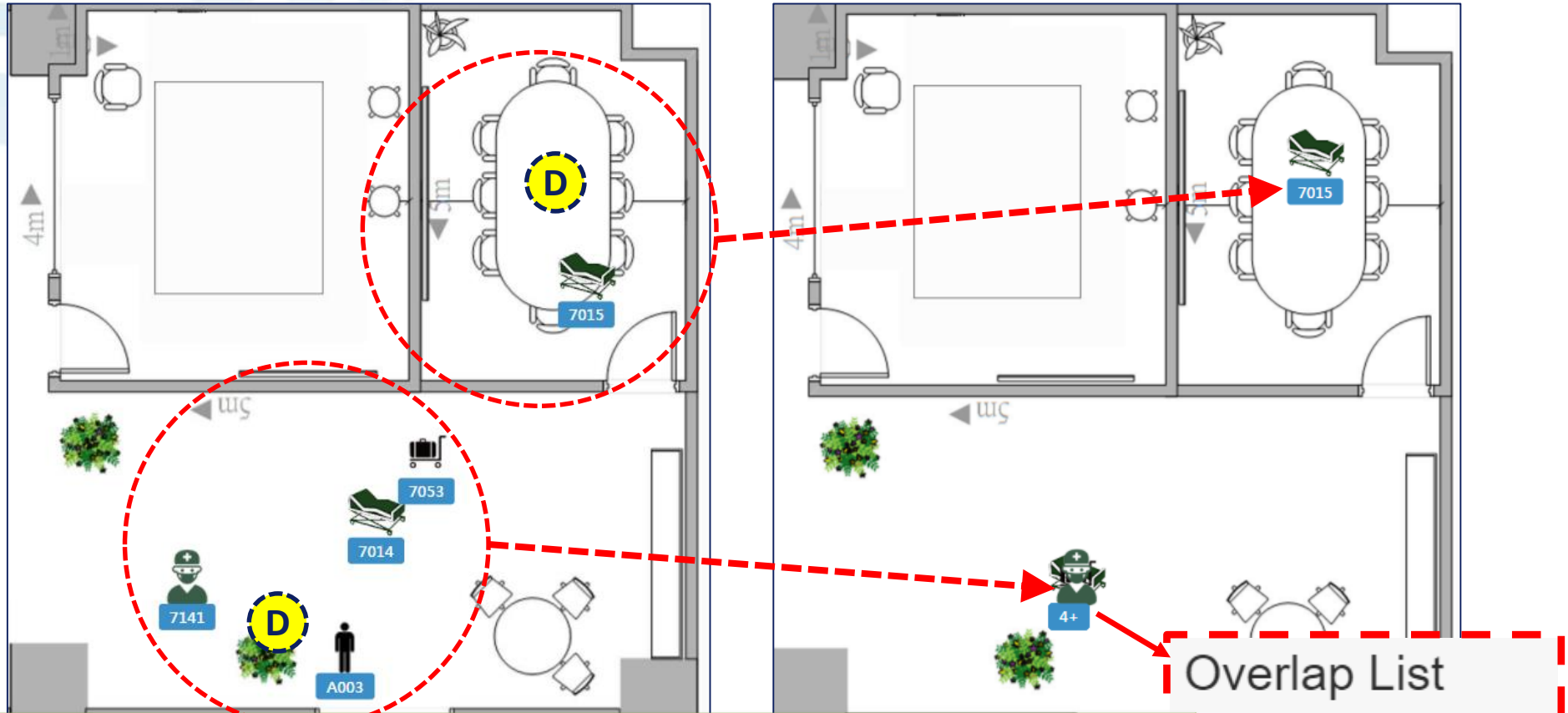
1

Setting the DP(display point) by clicking on the map, enter the name to update . (the coordinates is shown in parentheses)

2

the DP symbol will be shown as this after setting. Repeat above operation for more DP setting or delete by clicking the right-side "X" button of the symbol.

4. Example of using Display Point



If you set the DP, the icon on show page will be displayed at the DP which is closest to the real time location.

4+

The icons will be overlap on the DP and shown its total number, you can click the number sign and show the device list for checking further details of single device

Overlap List

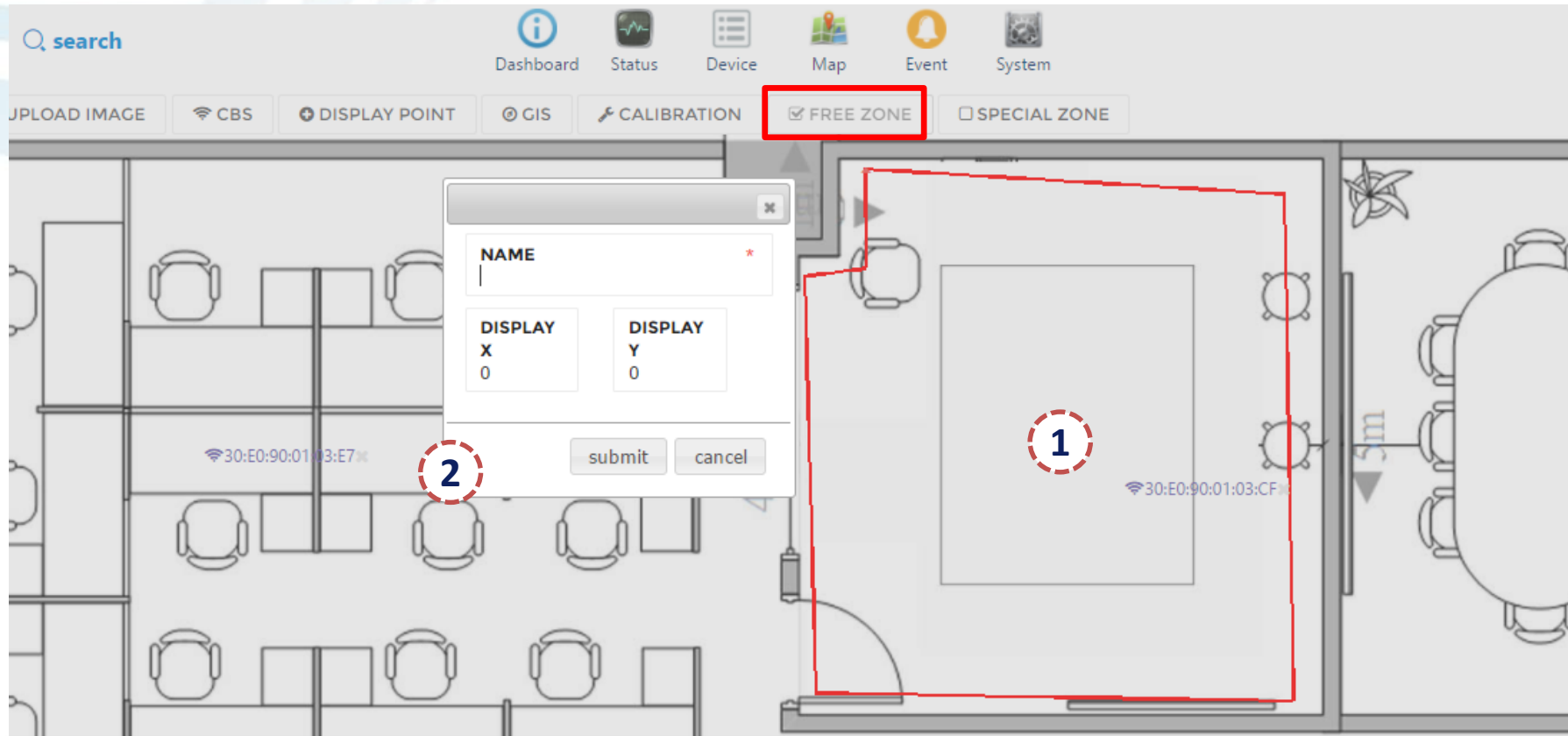
A003	7014
7053	7141



4+



5. Setting Free Zone



1

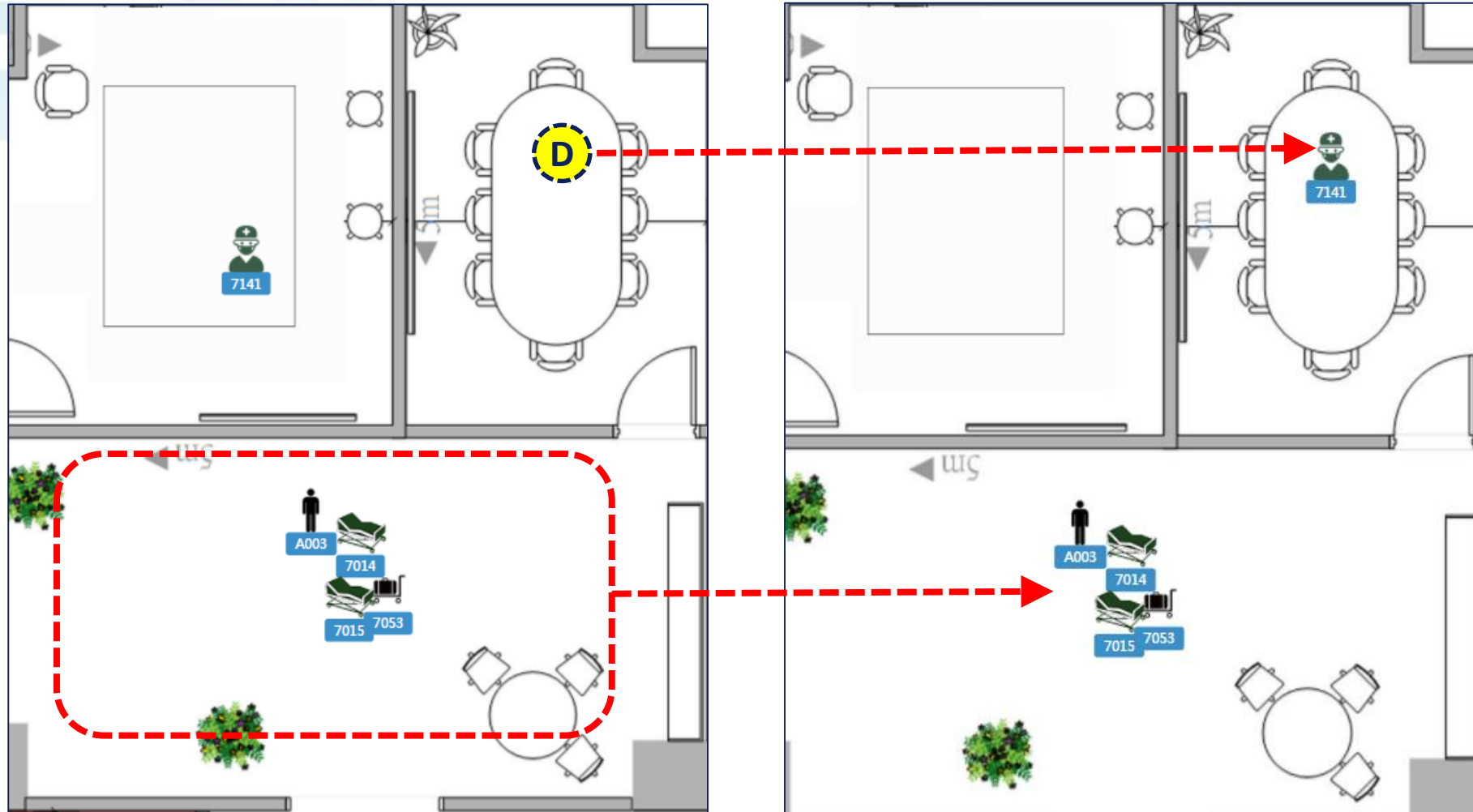
Select the FREE ZONE tab. Make a multilateral enclosed area by clicking on map , enter the name to upload. Delete the area by clicking the X button of name symbol.

2

Display (0,0) means that the icons in the area is not affected by the DP, or you can set another coordinate (x, y) to make the icons in the area to be displayed on the coordinate you setting.



6. Example of using Free Zone



In the area of Free Zone(0,0), the icons are displayed on the real time located positions, but outside of the area, the icons are grouped to the nearest DP.

Thanks and Q&A

